



GASTRO INTESTINAL LAB



Organization Accredited
by Joint Commission International



**FOR FURTHER INFORMATION OR TO ARRANGE
AND APPOINTMENT, PLEASE CONTACT:**

Anita Bowes - Clinical Nurse Specialist 091-785777

OR FOR GI REFERRAL

Mr Joyce - Colorectal Surgeon 091-720020

Mr O'Riordan - Upper GI Consultant 091-720189

Doughiska, Galway, Ireland

Phone: + 353 (0)91 785000 Fax: + 353 (0)91 785480

E-Mail: info@galwayclinic.com Web: www.galwayclinic.com

www.galwayclinic.com

**THE GALWAY CLINIC NOW PROVIDES THE FOLLOWING
GI PHYSIOLOGY STUDIES:**

- Anorectal Manometry
- Stationary Manometry of the Oesophagus
- 24hr oesophageal PH & Impedance Studies

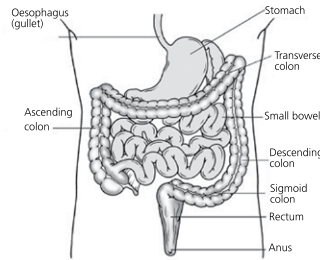
GASTRO INTESTINAL LAB

Gastro intestinal manometry is a low risk investigation with no serious associated problems. It is carried out as a side room procedure with no general anaesthetic making the investigation quick with little or no preparation.

What is Anorectal Manometry?

This measures the pressure of the anal sphincter muscles, the sensation in the rectum and neural reflexes that are needed for normal bowel movement.

- There is no preparation involved for this study which will take approximately 30mins. Patients are asked to lie on their left side, a thin tube with a balloon attached will be gently inserted into the rectum. The patient is then asked to relax, push or squeeze while the pressures are recorded.



What are the clinical benefits for the patient?

- Assessment of weak/torn anal sphincter muscles
- Identification of poor rectal muscle sensation
- Diagnosis & treatment plans for constipation/diarrhoea

What is Stationary Manometry of the Oesophagus?



MMS Stationary Manometry Unit

Oesophageal manometry is the recording of muscle pressures and coordination of activity in the oesophagus. It can evaluate the action of the muscle waves (peristalsis) in the main portion of the oesophagus, as well as the valve at the lower end (lower oesophageal sphincter/ LOS). It is also used to determine the position of the 24hr PH catheter.

PPI's e.g. protium, nexium must be stopped at least seven days prior to this study.

- To prepare for oesophageal manometry the patient must fast for 3 hrs prior to the procedure, which usually takes about one hour. A thin, soft tube is gently passed through the nose, upon swallowing the tip of the tube enters the oesophagus and the nurse specialist then quickly passes it down to the desired level. When the lower oesophageal sphincter muscle is identified the patient is asked to swallow a series of ten water swallows while the pressure is recorded. After this the tube is removed.

A 24-hour oesophageal PH & impedance study records the levels and changes of acid content in the oesophagus over a 24-hour period. After the stationary study a finer tube is passed into the oesophagus to the correct position. This is then secured and attached to a recording box, the patient returns home to carry on their normal activities over the next 24hrs. The following day the tube and recording device are removed and the data analysed.



Ohmega Ambulatory Impedance & PH Recorder

Both tests are valuable methods of recording and evaluating the muscles of the oesophagus and LOS, as well as determining the cause of many symptoms. This information can help the consultant develop effective treatment plans for most patients with oesophageal disorders.

What are the clinical benefits for the patient?

- Evaluation of gullet and the lower oesophageal sphincter
- 24 hr monitoring of acid & non acid reflux episodes.
- Diagnosis & treatment plans for
 - Non cardiac chest pain
 - Dysphasia
 - Gastro Oesophageal Reflux Disease (GORD)

PATIENTS MAY BE REFERRED TO THE GI LAB DIRECTLY BY ANY REFERRING CONSULTANT OR BY THEIR GENERAL PRACTITIONER VIA A GI CONSULTANT

COVERED BY ALL THE MAJOR HEALTH INSURERS
(Subject to policy excess & shortfalls)

THE COST FOR SELF PAY PATIENTS IS €320.00
(Consultants fees not included)